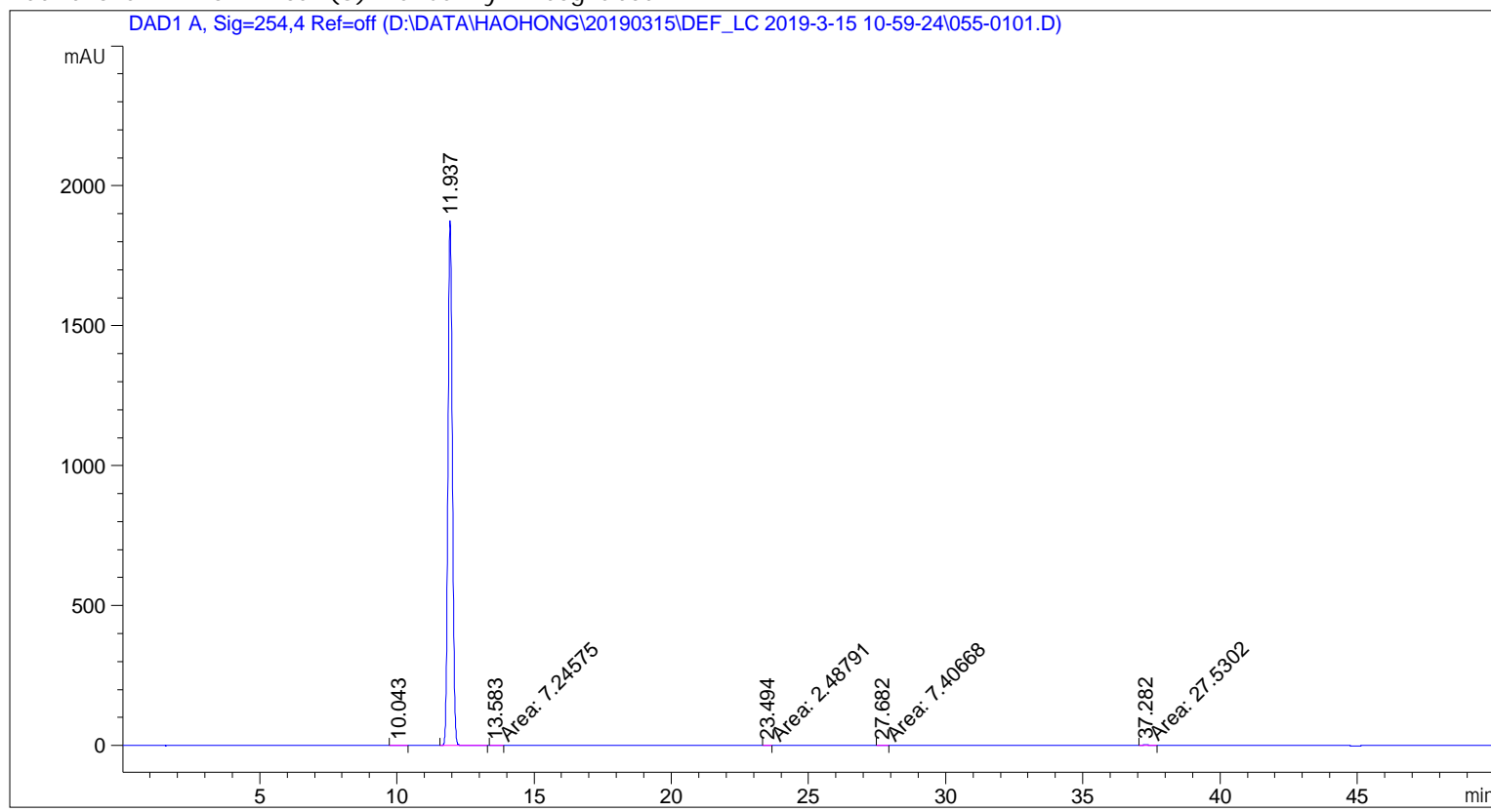


Sample Name: B-1

```

=====
Acq. Operator   : SYSTEM                               Seq. Line :    1
Acq. Instrument : LC-1                               Location  : Vial 55
Injection Date  : 03/15/2019 10:59:27 AM           Inj       :    1
                                                    Inj Volume: 5.000 µl

Acq. Method    : D:\DATA\HAOHONG\20190315\DEF_LC 2019-3-15 10-59-24\B-1.M
Last changed   : 03/15/2019 10:59:24 AM by SYSTEM
Analysis Method: D:\DATA\HAOHONG\20190315\DEF_LC 2019-3-15 10-59-24\B-1.M (Sequence
Method)
Last changed   : 03/15/2019 12:46:05 PM by SYSTEM
                (modified after loading)
Additional Info: Peak(s) manually integrated
    
```



Area Percent Report

```

Sorted By      :      Signal
Multiplier     :      1.0000
Dilution      :      1.0000
Use Multiplier & Dilution Factor with ISTDs
    
```

Signal 1: DAD1 A, Sig=254, 4 Ref=off

Peak #	RetTime [min]	Type	Width [min]	Area [mAU*s]	Height [mAU]	Area %
1	10.043	BB	0.1695	15.60378	1.42761	0.0748
2	11.937	BB	0.1735	2.08083e4	1875.09119	99.7612
3	13.583	MM T	0.1718	7.24575	7.03106e-1	0.0347
4	23.494	MM T	0.1162	2.48791	3.56722e-1	0.0119
5	27.682	MM T	0.1796	7.40668	6.87219e-1	0.0355
6	37.282	MM T	0.2300	27.53019	1.99498	0.0819